

Design Data	
Commutation	Brushed
Direction of rotation	Bi-directional
Bearing type	

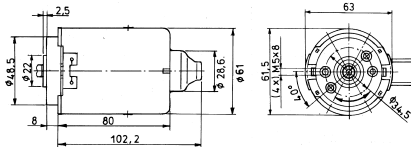
Performance data		
Rated voltage [V]	U_N	24
Nominal torque [Nm]	M_N	0.19
No-load speed [min^{-1}]	n_0	3,100.0
Nominal power [W]	P_N	52.7
Nominal current [A]	I_N	5.0
Nominal force [kN]	F_N	0.00
Duty cycle		s1

Sensor data	
Pulses	0
Output channels	0

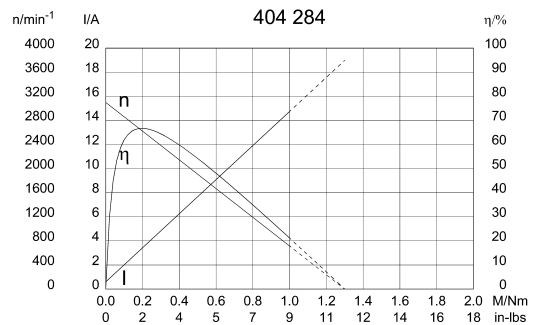
Other data	
Gear ratio	
Gear wheel material	
Suppression components	5 μ H
Enclosure class	IP 30
Weight [kg]	0.900

Remarks: 1 start worm

0272 A

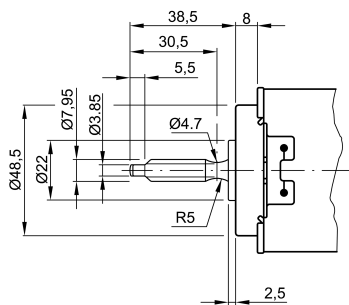


Motor picture



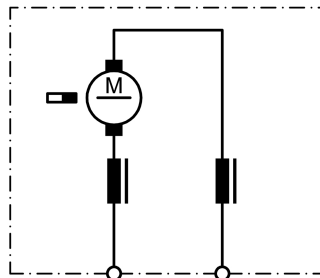
Output shaft drawing (W), Wiring diagrams (S) and Connector layout (K)

W 220

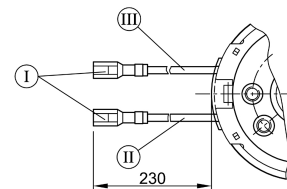


no of starts 1, lead angle 9°, pressure angle 10°, module 1, pitch 3,14159 mm (0,124")

S 27



K 180



I Blade terminal receptacles 2,8 x 0,8 DIN 46 247
 II green
 III red